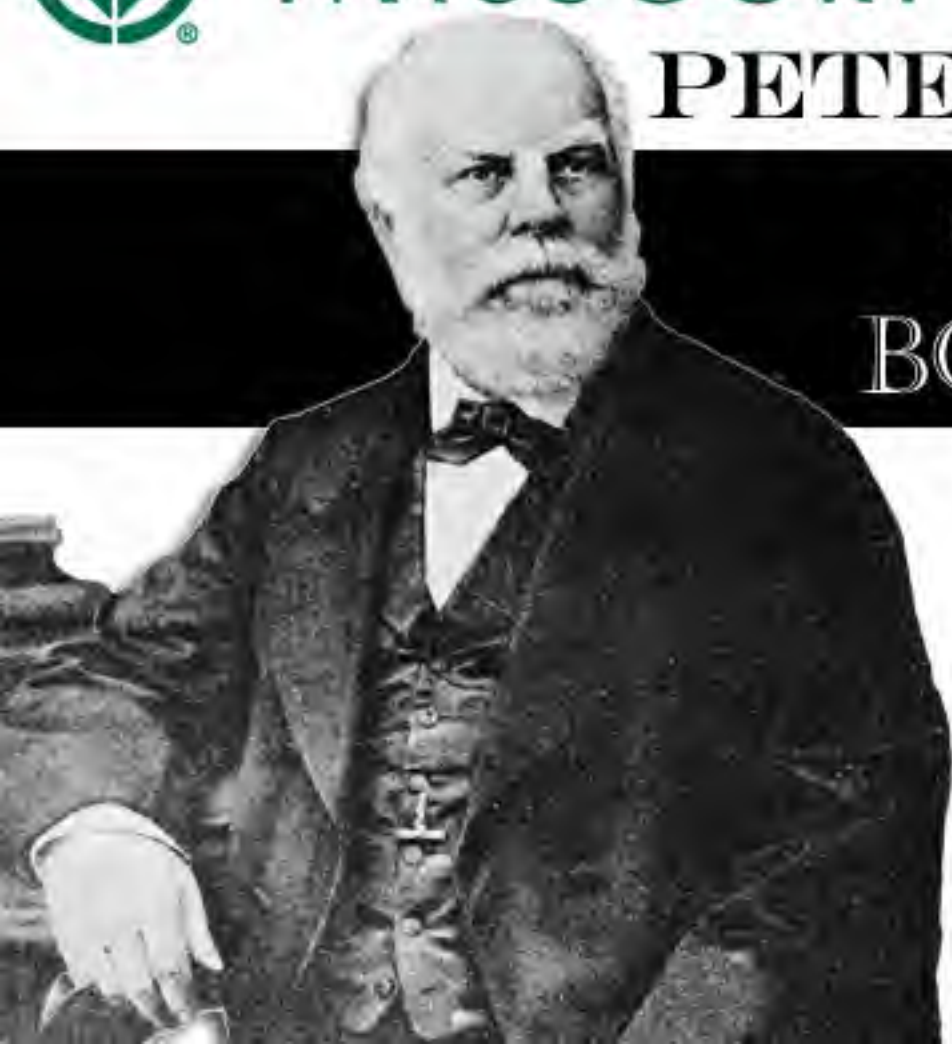




MISSOURI BOTANICAL GARDEN PETER H. RAVEN



GEORGE ENGELMANN
BOTANICAL

Since
page
online
nu

29



Euph. prostrata Ait!

Euph. Forskælii var *hirsuta* J. Gay -
Webb. Canes

tenuis

Bourgeois 1509

Not in the least distinct from

E. prostrata

a large leaved, smoothish form,
the edges of capsule sharp
and hairy, ^{short} styles & deeply divided
stig. - clavate.



0 1 2 3 4 5 6 7 8 9 10

cm

copyright reserved



MISSOURI
BOTANICAL
GARDEN

7141

MISSOURI BOTANICAL GARDEN
GEORGE ENGELMANN PAPERS

[Faint, illegible handwriting]



0 1 2 3 4 5 6 7 8 9 10

cm

copyright reserved



MISSOURI
BOTANICAL
GARDEN

Cuscut. Senella Kunth

Orinora Humboldt
al Boupl.



Caulis prostratus annuus, in locis
 pubescentibus; infra pilosulus
 foliis, obovatis (oblongis) integerrimis
 2. nervis apice radicibus membranis lacini
 stipulis superioribus ovatis
 super parvis linearibus
 involucri parvis; glandulis
 inapparentibus lobis 3 angulis
 stylis ovario piloso brevioribus
 stigmatibus glandulatis
 semine transversis rugosis costatis
 angulis crenulatis
 capsulis acutis pilosulis
 leaves 1-1 1/2 li long, seeds 0.4 li



0 1 2 3 4 5 6 7 8 9 10
cm

copyright reserved



MISSOURI
BOTANICAL
GARDEN

7142

Faint handwritten notes at the top left of the page.



MISSOURI BOTANICAL GARDEN
GEORGE ENGELMANN PAPERS



Large block of very faint, illegible handwritten text covering the lower half of the page.



0 1 2 3 4 5 6 7 8 9 10

cm

copyright reserved



MISSOURI
BOTANICAL
GARDEN

E. protota Aiton
Mouth of Niger
Africa



0.4



gland. not appendiculated
 styles short. bifid to
 middle
 Ovary hairy
 stem pubescent on
 lower side
 leaves oval entire
 or serrate
 pilose as
 edge, ~~or~~ ~~pubescent~~
 stipules united
 triangular ciliate
 rays hairy sharp angled
 angles acute

[Faint mirrored text from the reverse side of the page is visible through the paper, including 'MISSOURI BOTANICAL GARDEN' and 'GEORGE ENGELMANN']



hemianthes G.

Ms. E

Hale

Strom

Hayden

Gregg 214

— 457. a

Arkansas

Geyer Mission

Fendler 799

Ms. Torr

Eaton Tex

Drum Tex II, 320

Key with Oldgett.

Drinking Texas

Worley's Drilling

Strom

Arkansas, Nuttall

Red River Arkansas

MISSOURI BOTANICAL GARDEN
GEORGE ENGELMANN PAPERS

no 7143 03



0 1 2 3 4 5 6 7 8 9 10

cm

copyright reserved



MISSOURI
BOTANICAL
GARDEN

30

P. ovalifolia

var *purpurea* (*E. purpurea* Hald)



0 1 2 3 4 5 6 7 8 9 10

cm

copyright reserved



MISSOURI
BOTANICAL
GARDEN

7144

MISSOURI BOTANICAL GARDEN
GEORGE ENGELMANN PAPERS

Handwritten text, likely a signature or name, possibly "George Engelmann" and "Missouri Botanical Garden".



0 1 2 3 4 5 6 7 8 9 10

cm

copyright reserved



MISSOURI
BOTANICAL
GARDEN

398 ovalifolia ² Wright 1855

B.



ramis caulis prostratis puberulis
foliis glabris ^{ovatis} obliquis
obovatis ^{ovatis} obtusis ^{obovatis}
stip. multifidis setae usque apice
ante diem minutis tuberculatis
glandis angustissimis appressis
latis;

stylis brevibus pediculis
ad basin bifidis, styg. utriusque
demum latis ^{glabris}
capite ant. angul.
sem. 0.6 ^{trigonis} angustis
angulis acutis integerrimis

caulis 1-1 1/2 l. l. by

caulis rososus



0 1 2 3 4 5 6 7 8 9 10

cm

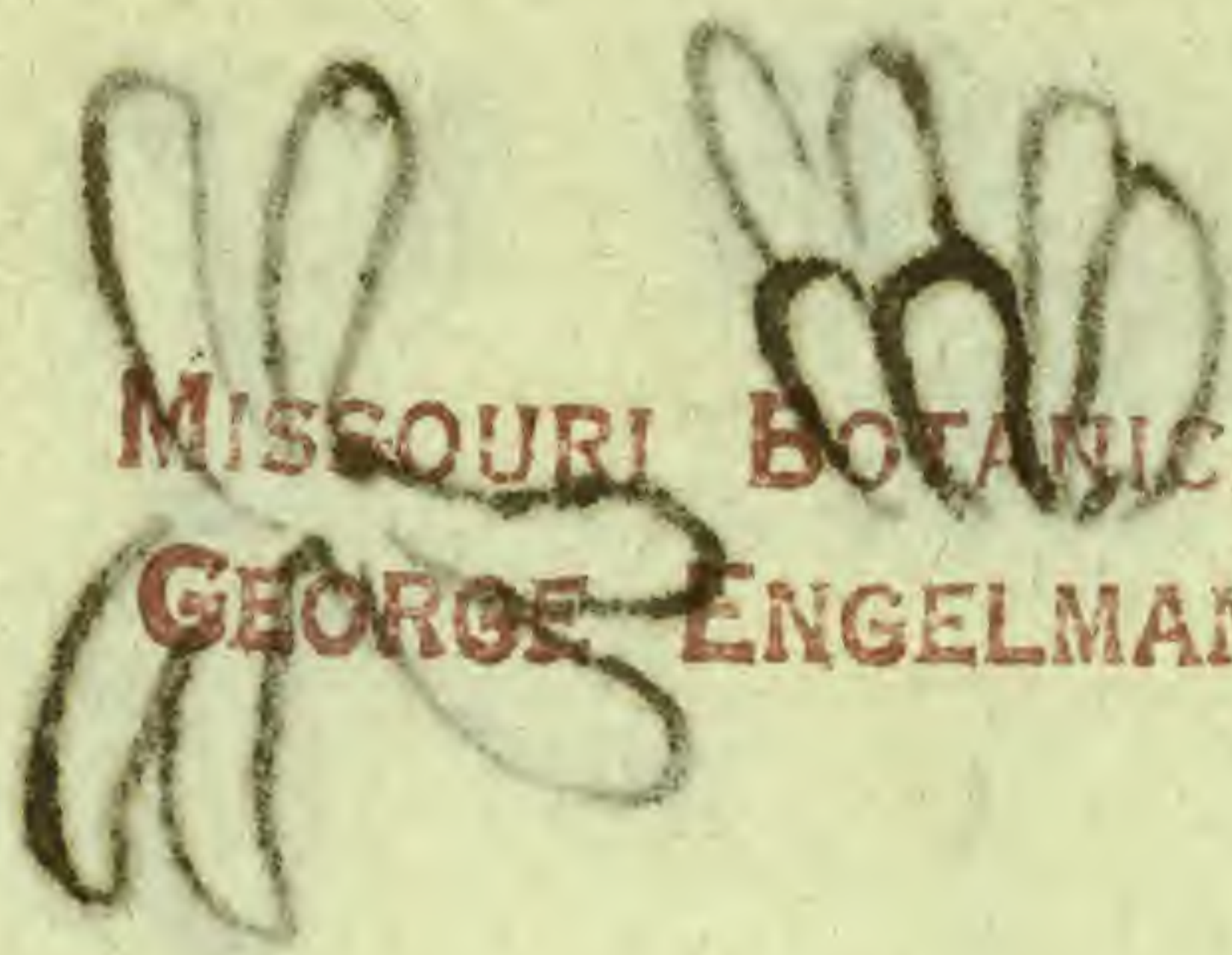
copyright reserved



MISSOURI
BOTANICAL
GARDEN

7145

Handwritten notes



MISSOURI BOTANICAL GARDEN
GEORGE ENGELMANN PAPERS



0 1 2 3 4 5 6 7 8 9 10

cm

copyright reserved



MISSOURI
BOTANICAL
GARDEN

ovalifolia ^{coll} 1851
30. p. mixed with Wright's
private no number

herb. diffusis glauca
peti. caulibus pilosis
fere inferne, ovarii
capulisque adpressis
puberulis -

fol. obliqua orbiculatis
s. reniformibus ^{cordatis}
obtusis ^{obtusis} integris
stipulis laciniis max
deciduis

~~stipulis~~ glomeratis
foliorum lateralibus
alternatis (= hemi-
anis)

stylis brevibus
med. fissis ^{ultra} styg-



0 1 2 3 4 5 6 7 8 9 10

cm

copyright reserved



MISSOURI
BOTANICAL
GARDEN

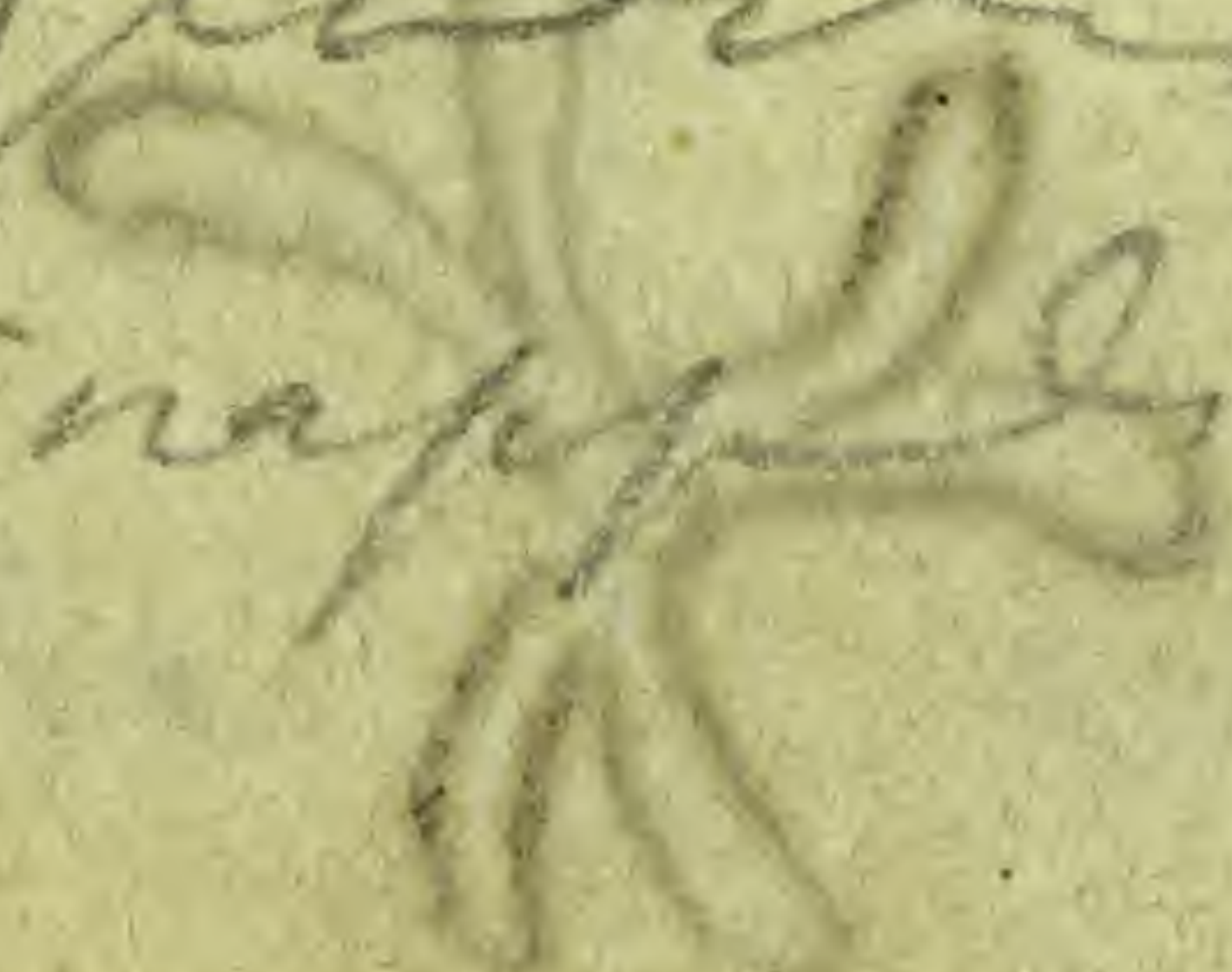
7146

Strobilifer, pedicel
capsula acutangula
puberula
sem. o. b. lin

acut angulata Annon-
6-7 rugae
vers rugos - angulis
subcrenatis

stylis = hemisphaeroid
anly more fissi

involucro puberulo
segu. triangulatis
glabris minutis
inappressis



MISSOURI BOTANICAL GARDEN
GEORGE ENGELMANN PAPERS



0 1 2 3 4 5 6 7 8 9 10

cm

copyright reserved



MISSOURI
BOTANICAL
GARDEN

22 *Valipolia*

Nov. 1848. 6.

30. p.



annua prostrata. piloso-
 pubescens
 foliis e basi valde obliqua
 obtusis, subcordatis ovatis s.
 obovatis obtusis serratis
 super glabris pilosis
 stipulis lanceolatis (subtus
~~comatis~~ pilosis
 glabris) subtus
 involucri turbatis; glandis
~~retrospicuis~~ vix parvis
 oppositis, basi l
~~caulis~~ villosis
 stylis minutis ultra
 medium divisis
 cap. villosis ant. angul

Ann. Missouri Bot. Gard. 1848. 6. 30. p.



0 1 2 3 4 5 6 7 8 9 10

cm

copyright reserved



MISSOURI
 BOTANICAL
 GARDEN

7147 *Orchidopsis* 20.00
sem



semi - 0.4 x 0.2 mm

anther angulatis rugosiusculis
angulis acutis orbiculatis.

MISSOURI BOTANICAL GARDEN
GEORGE ENGELMANN PAPERS



160

12

E. pedunculifera

tenosa

581-2



0 1 2 3 4 5 6 7 8 9 10

cm

copyright reserved



MISSOURI
BOTANICAL
GARDEN

7148

MISSOURI BOTANICAL GARDEN
GEORGE ENGELMANN PAPERS



0 1 2 3 4 5 6 7 8 9 10

cm

copyright reserved



MISSOURI
BOTANICAL
GARDEN

Euphorbia pulcherrima
Lower California

Febr 28 '75
S. Watson mis.



x4

stip. herb. in
corymbis tripartit



yellow glands white
apples



purple glands
rose apples

STATIONER AND PRINTER
"ST. LOUIS MO."
S. W. CO. SIXTH & MARKET STS.
CHERRY & CHEWING
DIA. 251 RASCHTOD
"2011 BROS"



0 1 2 3 4 5 6 7 8 9 10

cm

copyright reserved



MISSOURI
BOTANICAL
GARDEN

HOELKE BROS.,

APOTHECARIES AND CHEMISTS,

S. W. Cor. Sixth & Market Sts.,

ST LOUIS, MO.

MISSOURI BOTANICAL GARDEN
GEORGE ENGELMANN PAPERS

7149



0 1 2 3 4 5 6 7 8 9 10

cm

copyright reserved



MISSOURI
BOTANICAL
GARDEN

12

E. pedunculifera

Wright 1848

22



0.7 x 0.3

Annuum? perennans tota tenuiter
 pubescentia
 foliis basi oblique obtusis
 s. deltoideis integris
 obtusis
 stip. triangularibus
 glabris paniculatis terminalibus
 invol. hemisphaerico
 marginibus transversis appressis
 stylis petalibus ^{obtusis} ^{pub. longis} ^{per} ^{at} ^{basin}
 2fid. ^{pub.} ^{Stigma} ^{dilatatis}
 caps. ant. angul. pub.
 sem. 0.7, 0.2, profunde 4-nervis
 compressis angulis tuberculatis

11



0 1 2 3 4 5 6 7 8 9 10

cm copyright reserved

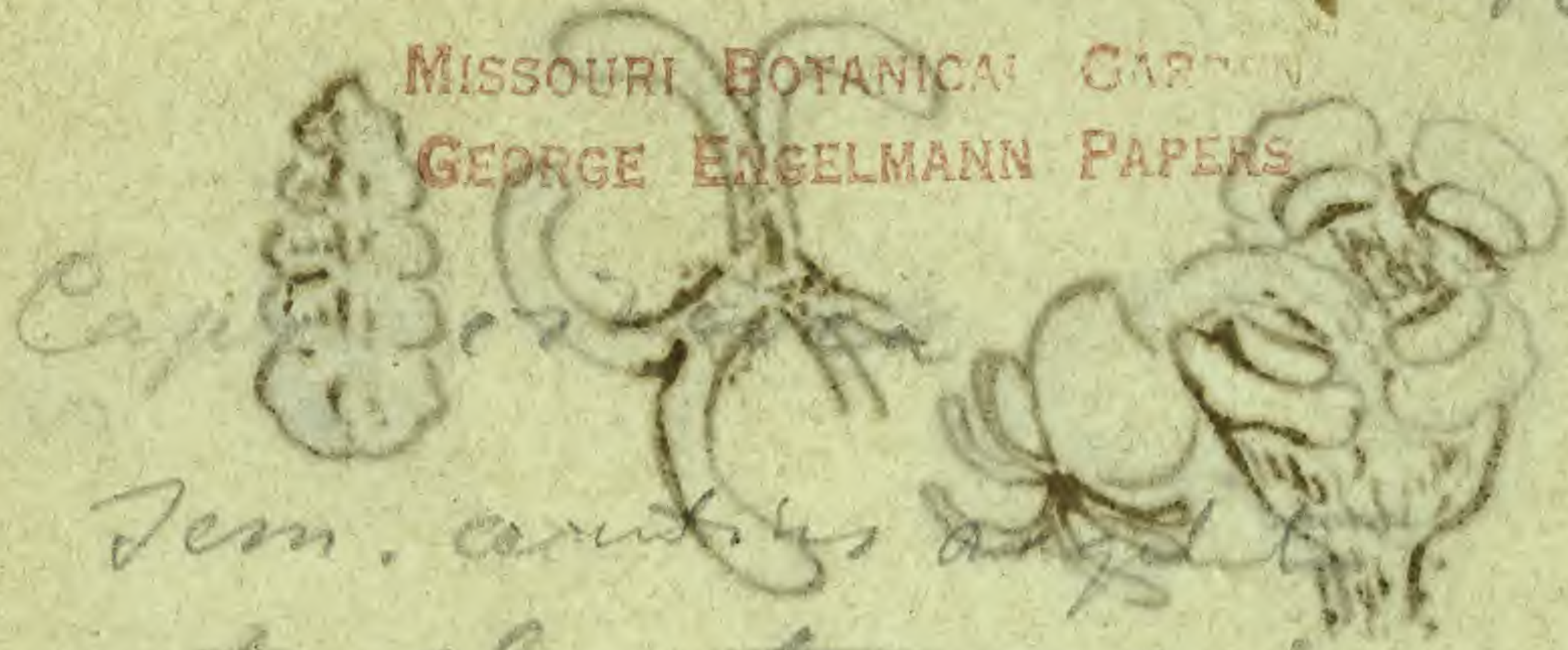


MISSOURI BOTANICAL GARDEN

7150

1848

MISSOURI BOTANICAL GARDEN
GEORGE ENGELMANN PAPERS



Sem. caritibus angulatis
 ovato elongato sulcis.
 transversis profunde induratis
 sub 5 nervis totum
 ambientibus 0.7 x 0.3



0 1 2 3 4 5 6 7 8 9 10

cm

copyright reserved



MISSOURI
BOTANICAL
GARDEN

161

24

Euph. glyptosperma n. sp.

E. polygonifolia Hook fl. bor
am.

winter flowers
Texas, Mexico
Washington Terr.

583-5



0 1 2 3 4 5 6 7 8 9 10

cm

copyright reserved



MISSOURI
BOTANICAL
GARDEN

7151

MISSOURI BOTANICAL GARDEN
GEORGE ENGELMANN PAPERS



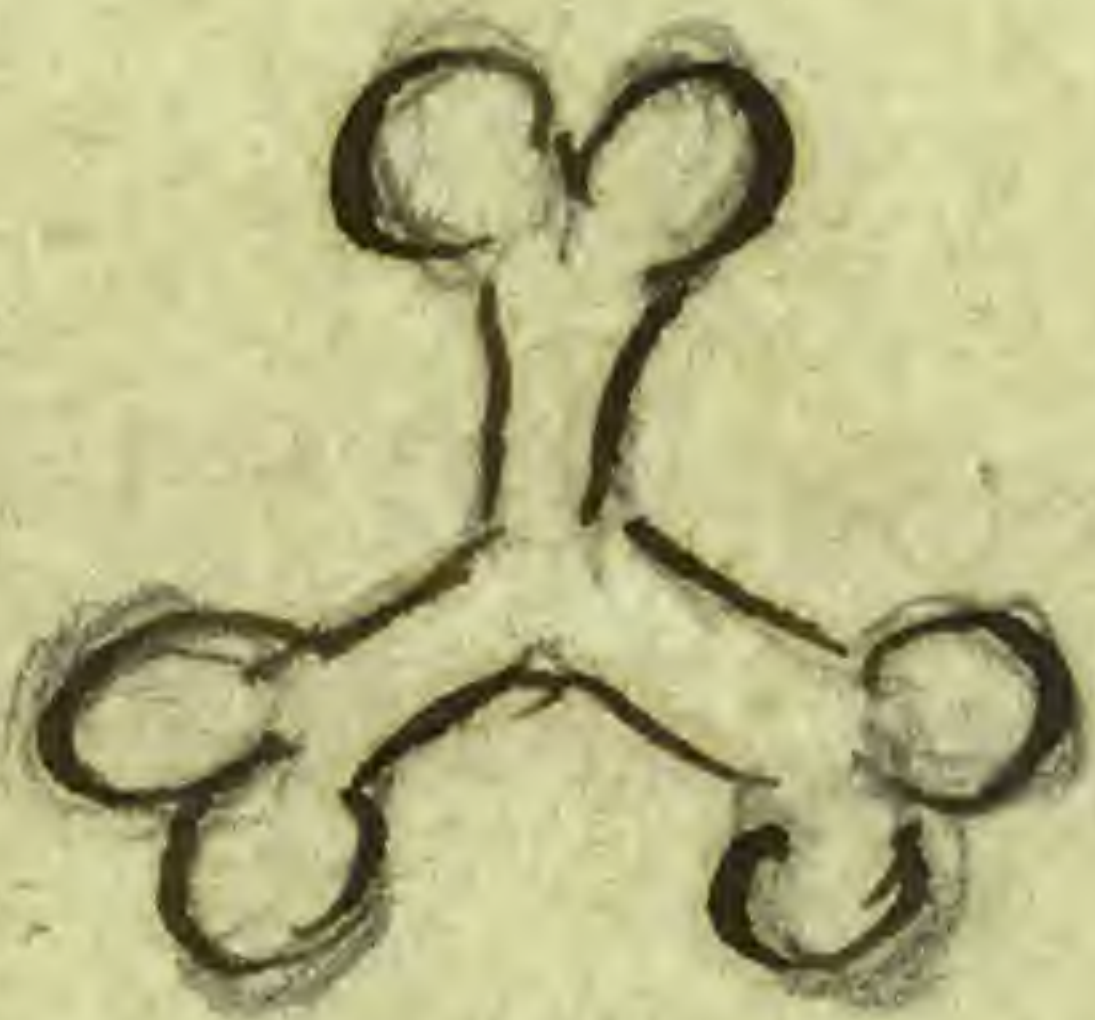
0 1 2 3 4 5 6 7 8 9 10
cm

copyright reserved



MISSOURI
BOTANICAL
GARDEN

24. *E. glyptosperma*



0.5"
raised with
my teeth from
Fort Pierre!

stipulis setaceo lacinatis
foliis angustis oblongis
vix apice serratis



same

same

St. Hayden - upper Missouri - leaves &
stipules the same, leaves entire
entire - at the base, equally
wide



same

same

St. Hayden - upper Missouri, leaves
a little more serrate

same

same

same

St. Hayden, Durbin's Hill, leaves almost
entire



same

same

Fossil leaf, Kansas
leaves on the broader side more serrate



Fossil, another specimen less
serrate leaves



0 1 2 3 4 5 6 7 8 9 10

cm

copyright reserved



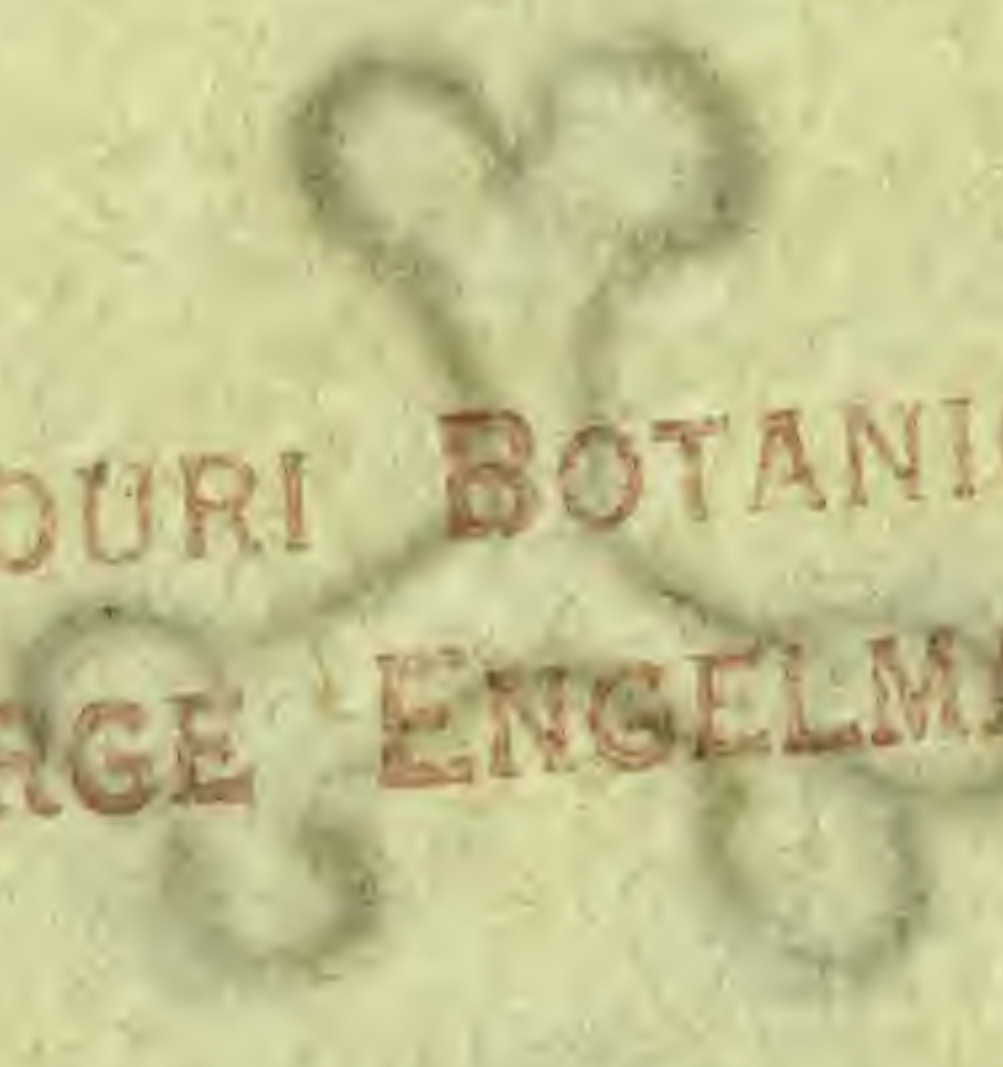
MISSOURI
BOTANICAL
GARDEN

Handwritten scribble

7152



MISSOURI BOTANICAL GARDEN
GEORGE ENGELMANN PAPERS



Angeli capsula

obtusius

amphodis a Caribaeis

de loco glomerata

luteo-lobis



0 1 2 3 4 5 6 7 8 9 10

cm

copyright reserved



MISSOURI
BOTANICAL
GARDEN

24 *E. glyptosperma*



Same — — infra prodris

foliis e basi vix
obliqua aciculatis
oblongis ^{obtusis} ~~obtusis~~ ^{obtusis}
obtusis versus apicem
anguste subseriatis

— — ^{stipulis}
— stylis apicibus ^{stipulis}
capulis obtusis angulis

seriatis ovatis
anguste rugosis
angulis acutis (natis)

—



0 1 2 3 4 5 6 7 8 9 10

cm

copyright reserved



MISSOURI
BOTANICAL
GARDEN

7153

Handwritten text, possibly a name or number, followed by ".3" and "AC".

MISSOURI BOTANICAL GARDEN
GEORGE ENGELMANN PAPERS

Faint, illegible handwritten text covering the majority of the page.



0 1 2 3 4 5 6 7 8 9 10

cm

copyright reserved



MISSOURI
BOTANICAL
GARDEN

E. glyptosperma var *microphylla*
24. β. ~~perma~~ ~~microphylla~~ ~~perma~~ ~~microphylla~~
Linth.



anther erecto-petala glaberrima
fol. a basi maxime oblique oblongis
obtusis v. emarginatis apice crenatis
v. integerrimis;
stip. lanceolatis fissis ~~laciniatis~~
~~obovatis~~

glor. lateral
invol. tubercul. minut. (3^{mm})
glor. vix aequata appendiculis
stylis ab. mit. petalis, brevibus
apice stigmat. 2 globis capitatis
bilobis

caps. acut.
sem. angul. acut. / angul. acut.
crenatis 0.4-0.5. transverse rug.

leaves 1-3 l. long. 1/2 - 1 broad

Wright 1853 = 1856 the same
~~1854 mostly~~



0 1 2 3 4 5 6 7 8 9 10

cm

copyright reserved



MISSOURI
BOTANICAL
GARDEN

Handwritten notes at the top of the page, including "3" and other illegible characters.



MISSOURI BOTANICAL
GEORGE ENGELMANN PAPERS



7154

Faint, mostly illegible handwritten text covering the majority of the page.



0 1 2 3 4 5 6 7 8 9 10

cm

copyright reserved



MISSOURI
BOTANICAL
GARDEN

163

11

S. Arizonica

Sum. Schott

586

5



0 1 2 3 4 5 6 7 8 9 10
cm

copyright reserved



MISSOURI
BOTANICAL
GARDEN

7155

MISSOURI BOTANICAL GARDEN
GEORGE ENGELMANN PAPERS



0 1 2 3 4 5 6 7 8 9 10
cm

copyright reserved



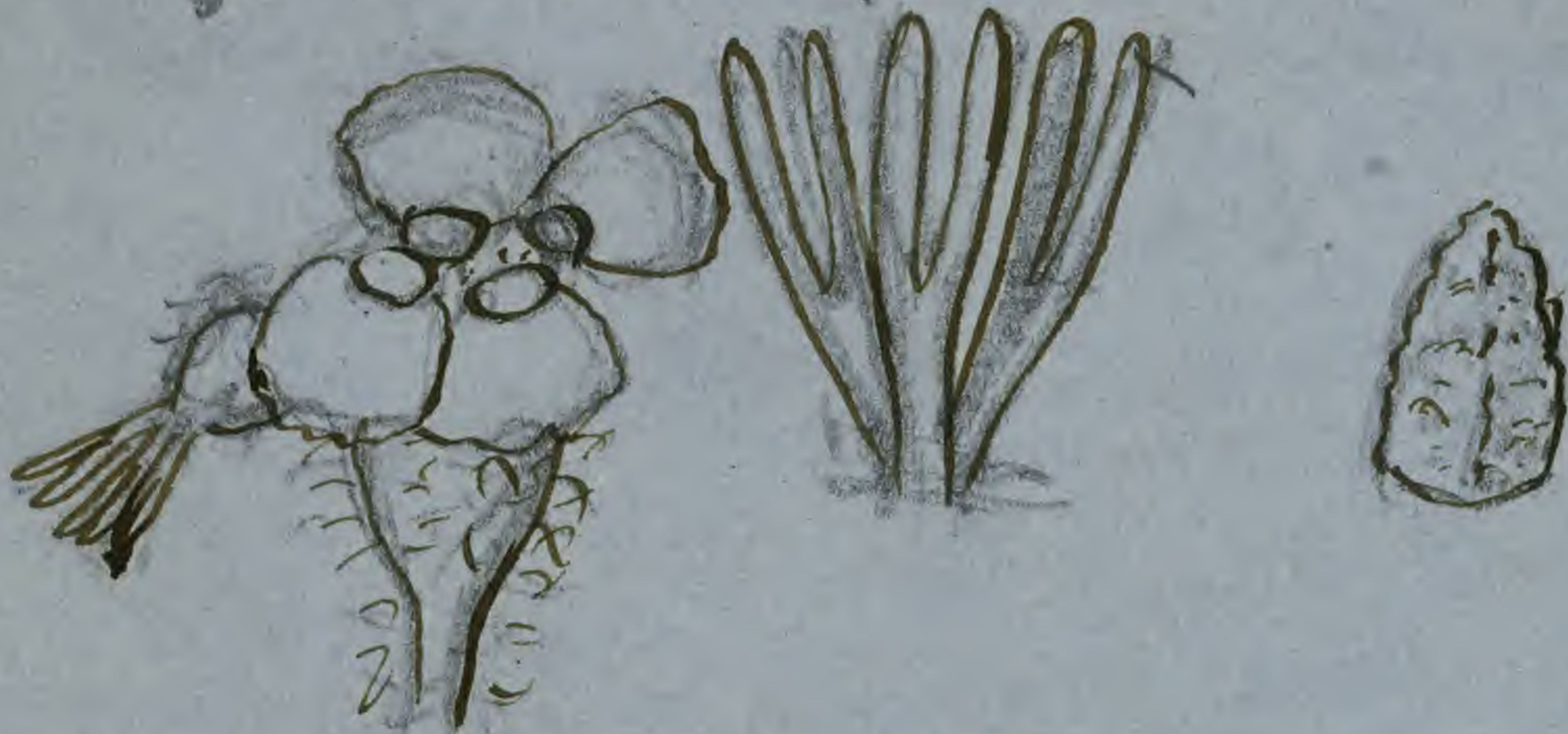
MISSOURI
BOTANICAL
GARDEN

11. *Eryonon curvis*

21

stellanode

Skett. 15



antherata ovata villosa pubes.

filis a basi late vix inaequali
ovatis obtusis integris ~~paucis~~
pilosis

stipulis immixtis
antheris alaribus longis
pedunculatis

involucris dactylatis ovatis glabris

perianthio appudicis longis
cellis obtusatis superius
postice fissis

stylis ovatis apice bifidis
(basi ventris) stig. filif.



0 1 2 3 4 5 6 7 8 9 10
cm

copyright reserved



MISSOURI
BOTANICAL
GARDEN

164

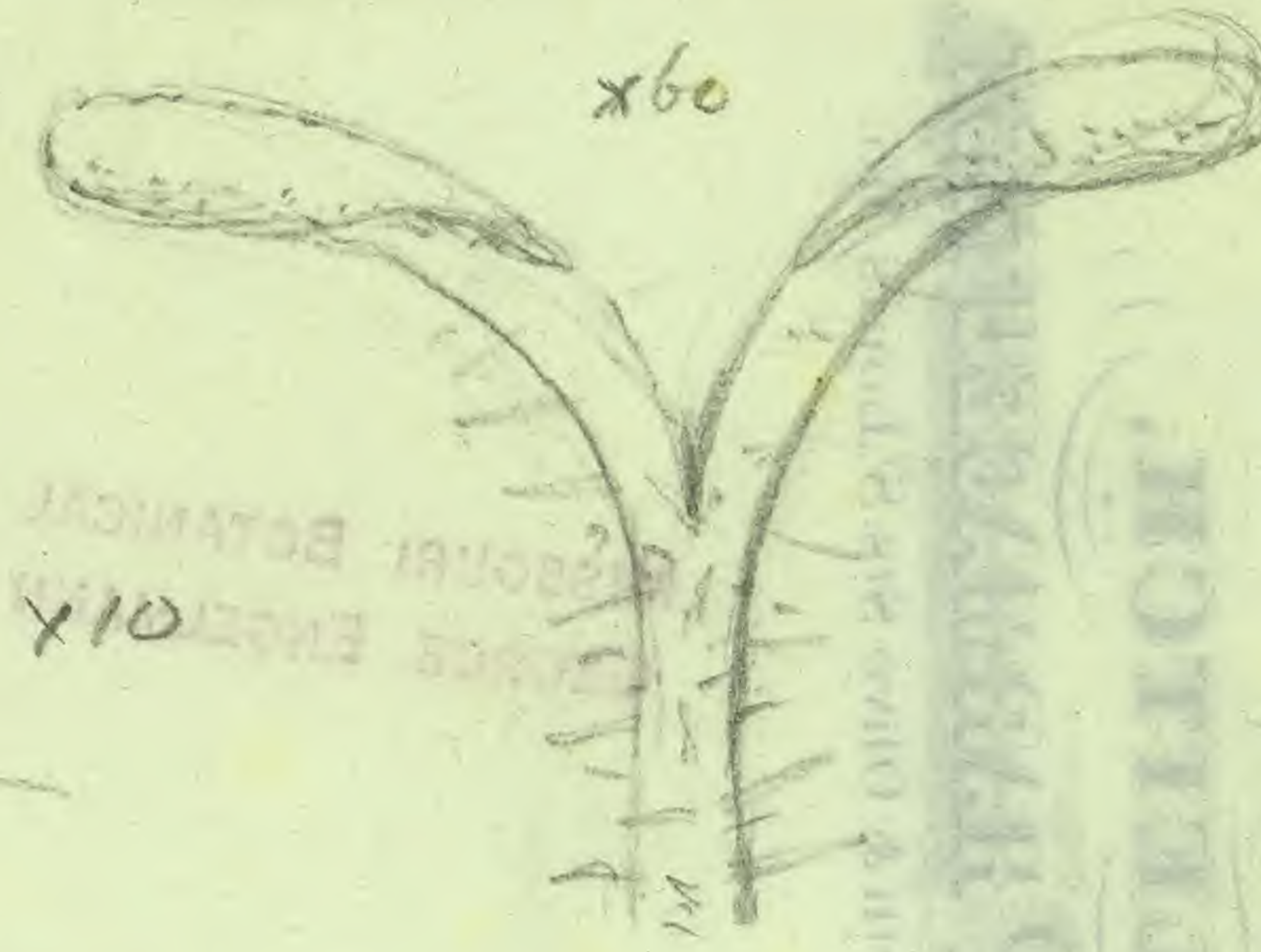
Ceph. leucophylla Benth

Jan 1861

appendices didynamis

x60

x10



x30



x30

gibrous!

seed nearly 0.5 lin by



0 1 2 3 4 5 6 7 8 9 10

cm

copyright reserved



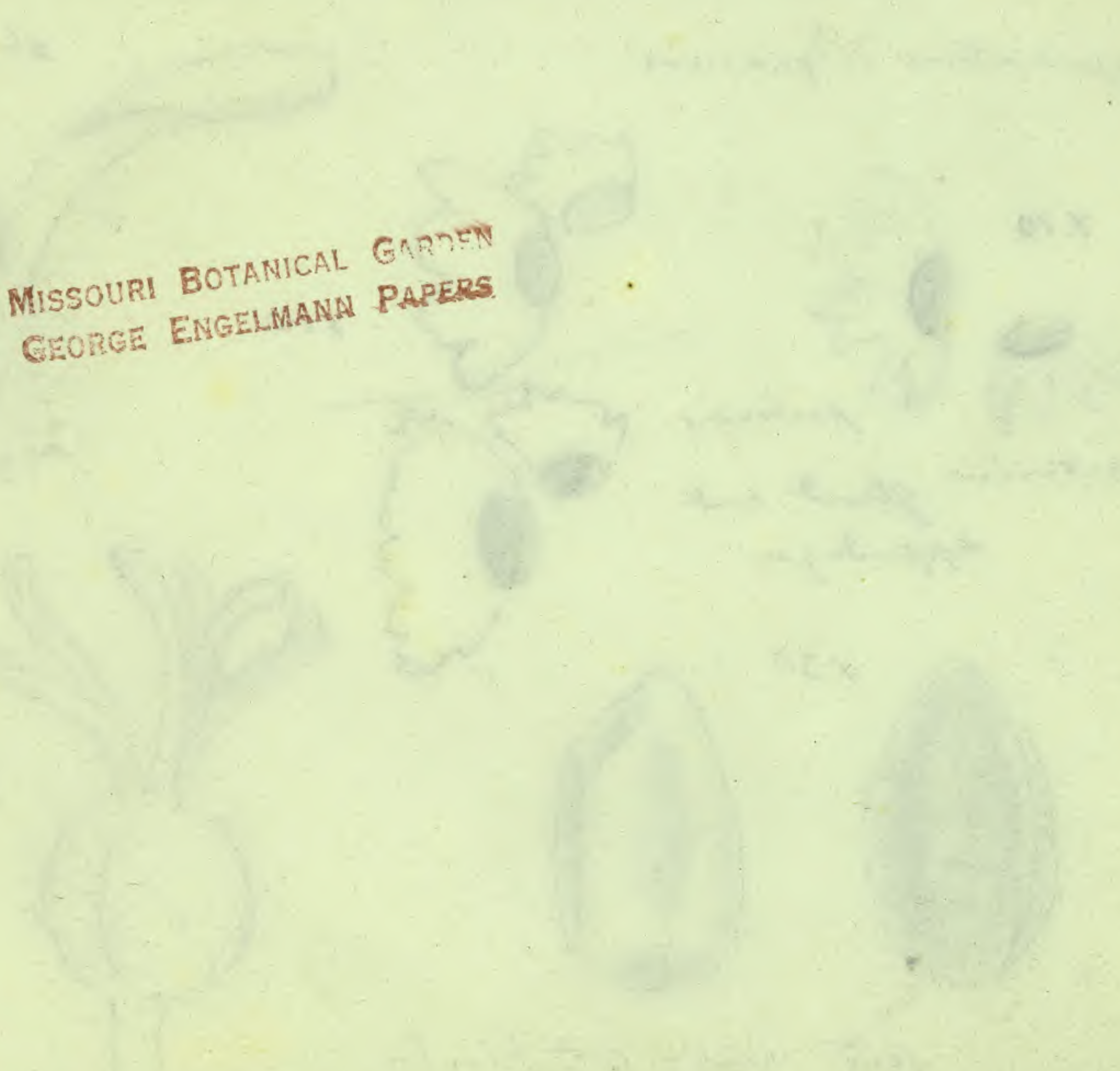
MISSOURI
BOTANICAL
GARDEN

7157

ALEX. LEITCH,
APOTHECARY & PHARMACEUTIST,

Marble Building Cor. Fourth & Olive Sts. St. Louis, Mo.

MISSOURI BOTANICAL GARDEN
GEORGE ENGELMANN PAPERS



0 1 2 3 4 5 6 7 8 9 10

cm

copyright reserved



MISSOURI
BOTANICAL
GARDEN

166

E. adenoptera Dröbtl

31
1844

E. anceps Benth!

1844

E. dioica HBK!

E. multiflora Willd - hb. 9291

E. densiflora kl. mss.

E. oxyoides Hook & Arn. Bot
Assemy 310
in Lin

E. dioica is the oldest name, but so inappli-
cable that I prefer Benthams published
name

Bonnier adopts adenoptera

588-600



0 1 2 3 4 5 6 7 8 9 10

cm

copyright reserved



MISSOURI
BOTANICAL
GARDEN

7158

MISSOURI BOTANICAL GARDEN
GEORGE ENGELMANN PAPERS

[Faint, illegible handwritten text, likely bleed-through from the reverse side of the page]



0 1 2 3 4 5 6 7 8 9 10

cm

copyright reserved



MISSOURI
BOTANICAL
GARDEN

3. e

E. schizoglossata

E. depressa Philippi
Hb. Berlin

St. Jago Chili



0 1 2 3 4 5 6 7 8 9 10

cm

copyright reserved



MISSOURI
BOTANICAL
GARDEN

7159

MISSOURI BOTANICAL GARDEN
GEORGE ENGELMANN PAPERS



0 1 2 3 4 5 6 7 8 9 10

cm

copyright reserved



MISSOURI
BOTANICAL
GARDEN

Euphorbia adnupta?
Biscayne Key, Florida Palms

Feb 28 '75

x 10



perobliq-
orbiculat cordat
crenulat
cinnam puberul

upper side
dipet
connatis
lacunulatis
filiis

lower side
stip. petiolum. lacunulatis
dilatatis



stylis apice
bifidis
siliqua retusa

allied to E. ...



0 1 2 3 4 5 6 7 8 9 10

cm

copyright reserved



MISSOURI
BOTANICAL
GARDEN

HOELKE BROS.,

APOTHECARIES AND CHEMISTS,

S. W. Cor. Sixth & Market Sts.,

ST LOUIS, MO.

MISSOURI BOTANICAL GARDEN
GEORGE ENGELMANN PAPERS

7160



0 1 2 3 4 5 6 7 8 9 10

cm

copyright reserved



MISSOURI
BOTANICAL
GARDEN